



OGGETTO: Realizzazione di n. 9 Alloggi di ERP  
Area Edificabile situata tra Via Aurelia Nord e il  
Fosso del Poggio d'Oro - Cecina

PROGETTO ESECUTIVO  
DELLE STRUTTURE IN C.A.

Tipologia	copertura	copro
ST04c	PILASTRI corpo A	Dic 2012
Scala	1:50	Scale
		Scale
		Scale

Proprietà: Ing. Alessandro Bardi  
Ufficio tecnico: Casa Livorno e Progetti S.p.A.

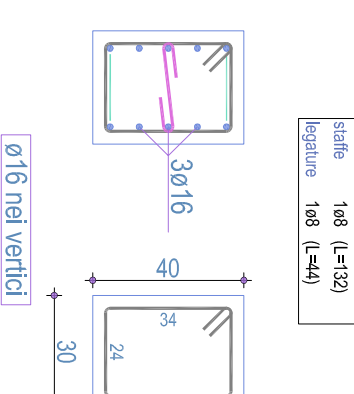
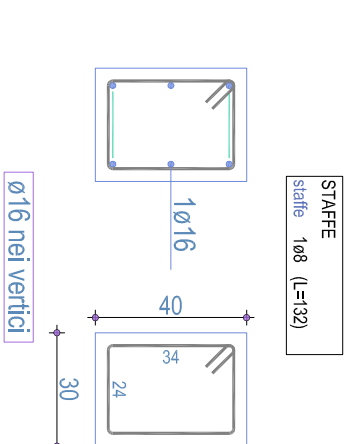
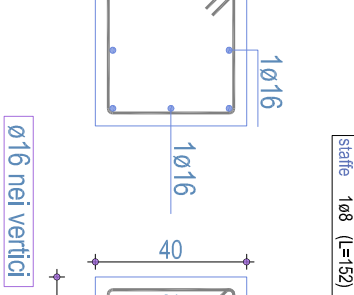
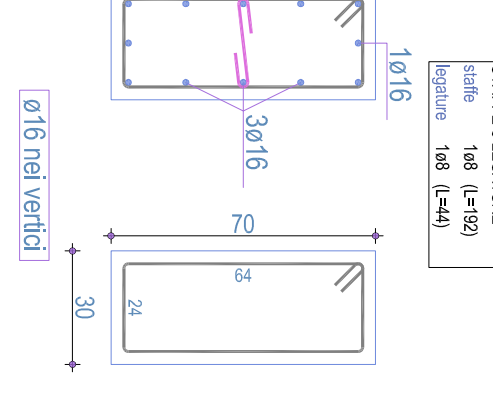
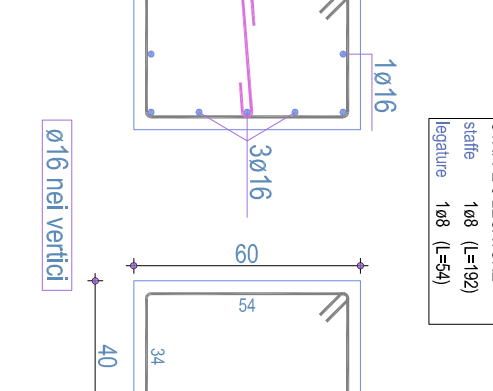
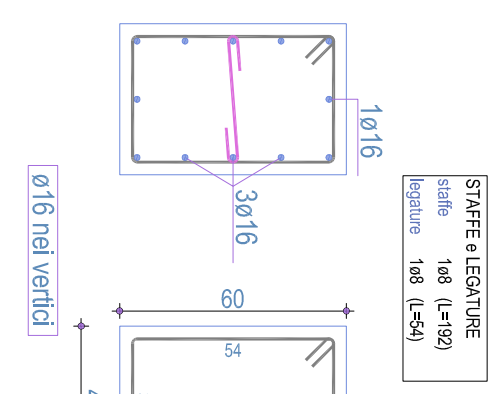
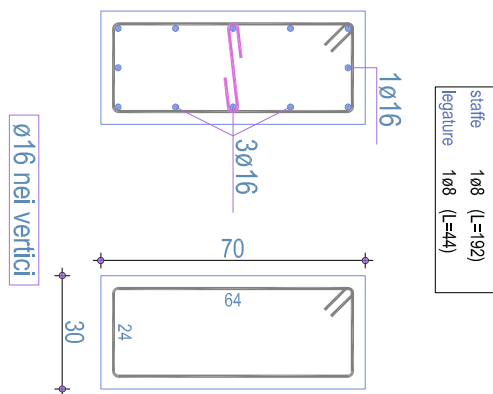
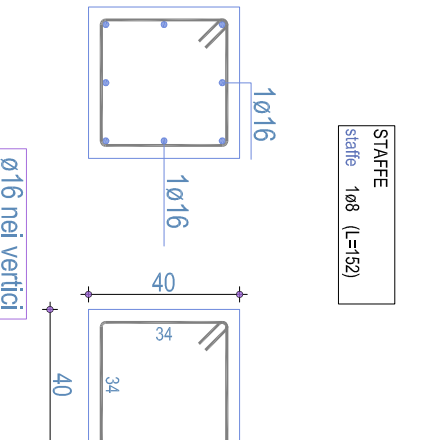
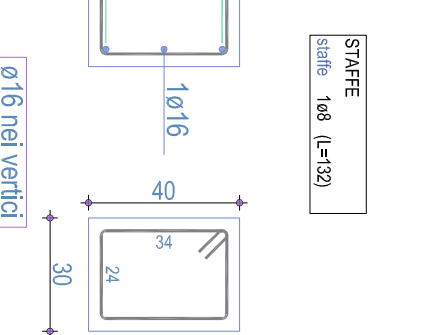
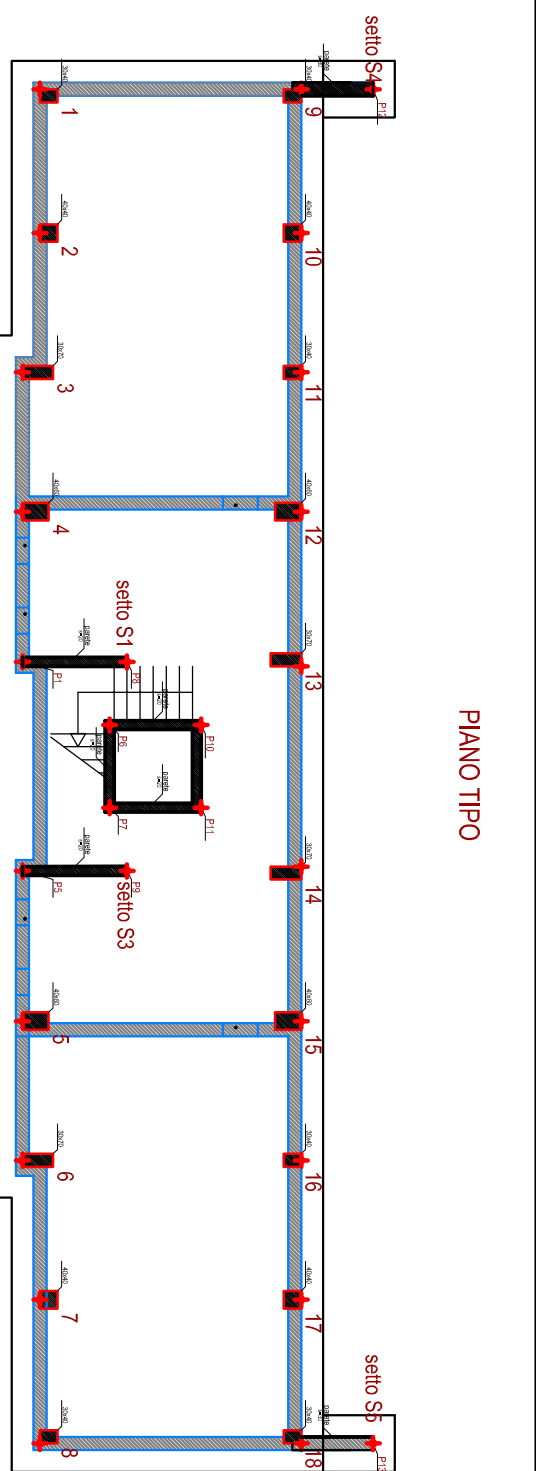
Doc. Ing. Alessandro Bardi  
CASA LAVORO PROGETTI  
N. 1189  
P. 11/01/2012

libro e firma

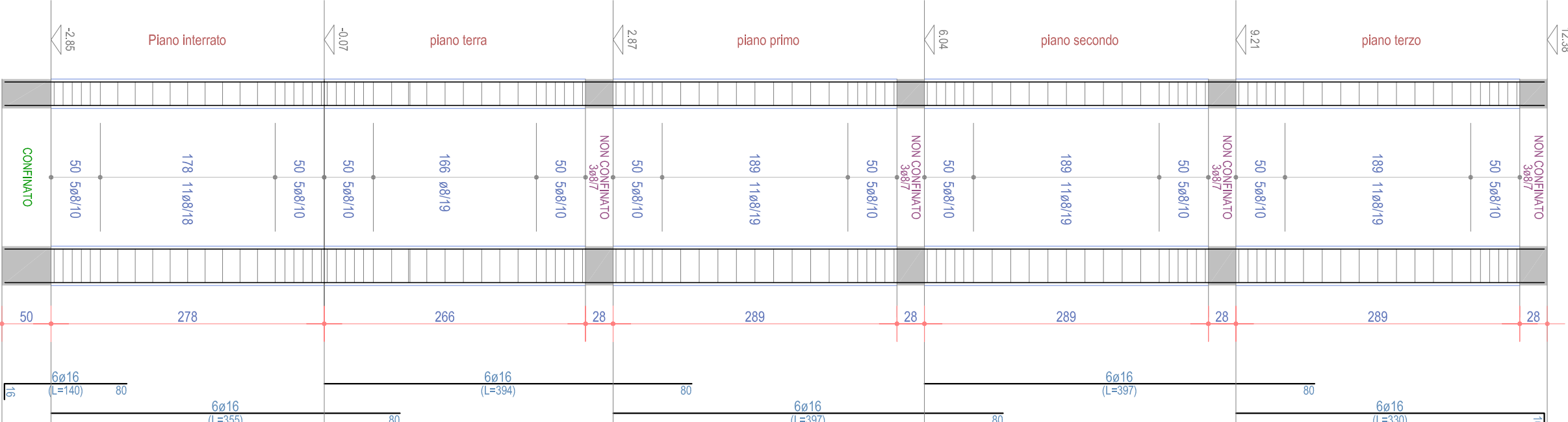
MATERIALI IMPIEGATI:

da per maggiore e sollecitazione: Rck= 150 kg/cm<sup>2</sup>  
da per strutture al elevazione tipo C25/30 Rck= 300 kg/cm<sup>2</sup>  
da per strutture al elevazione tipo C25/30 Rck= 300 kg/cm<sup>2</sup>  
da per strutture al elevazione tipo C25/30 Rck= 300 kg/cm<sup>2</sup>

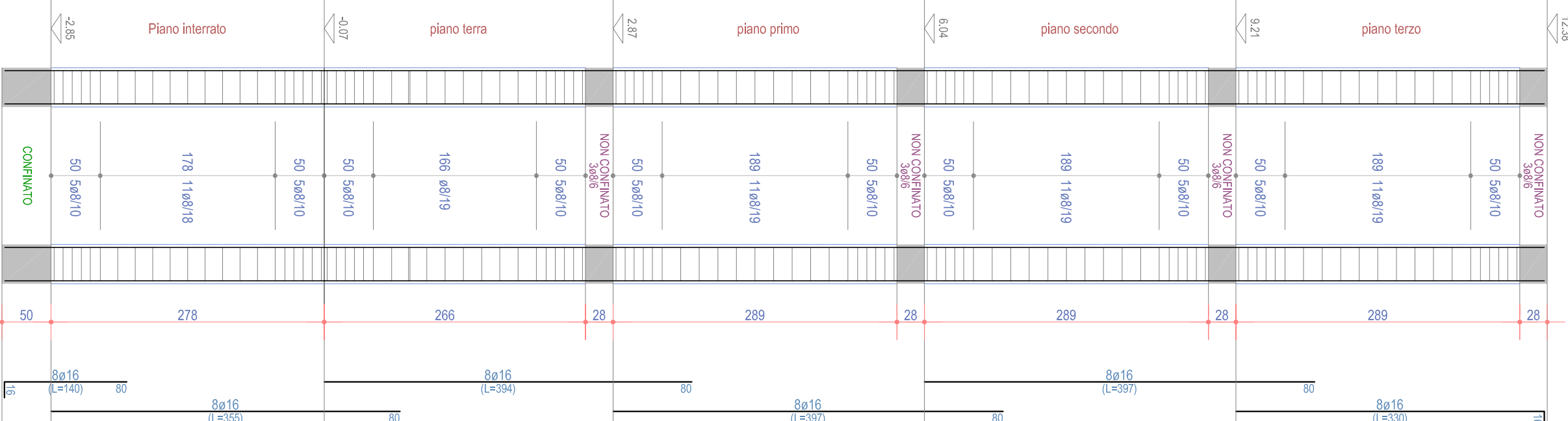
N.B. il copriferro delle strutture a vista è pari a cm 3



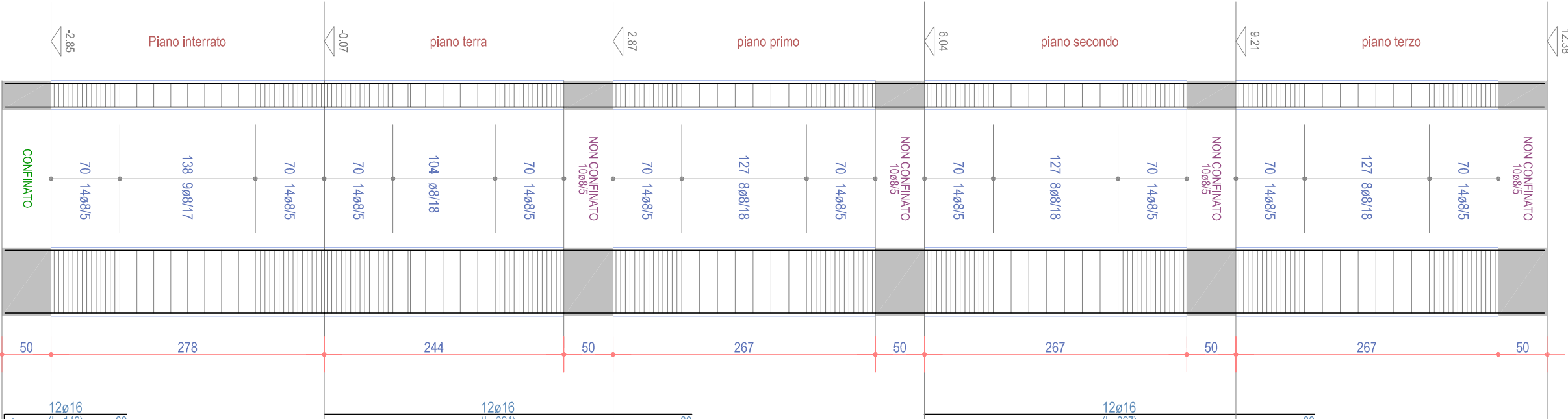
PILASTRATA 1



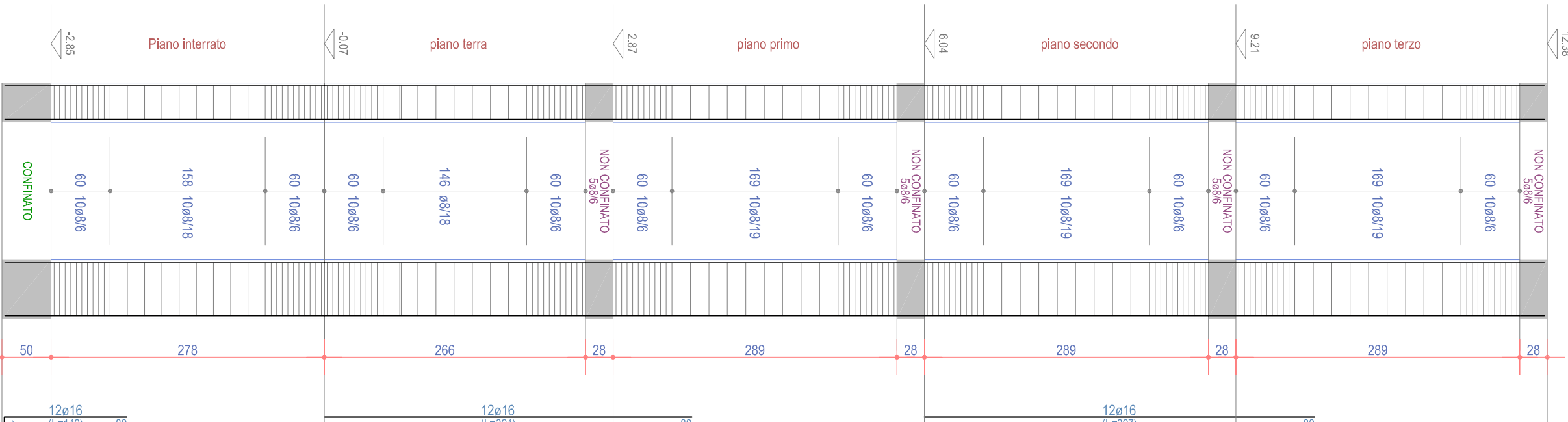
PILASTRATA 2



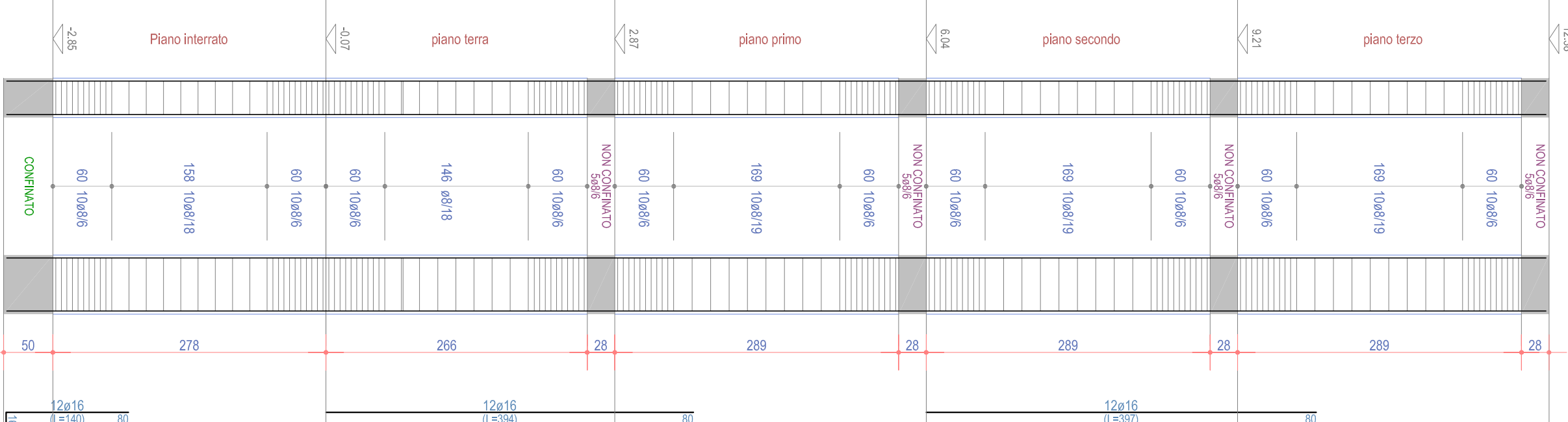
PILASTRATA 3



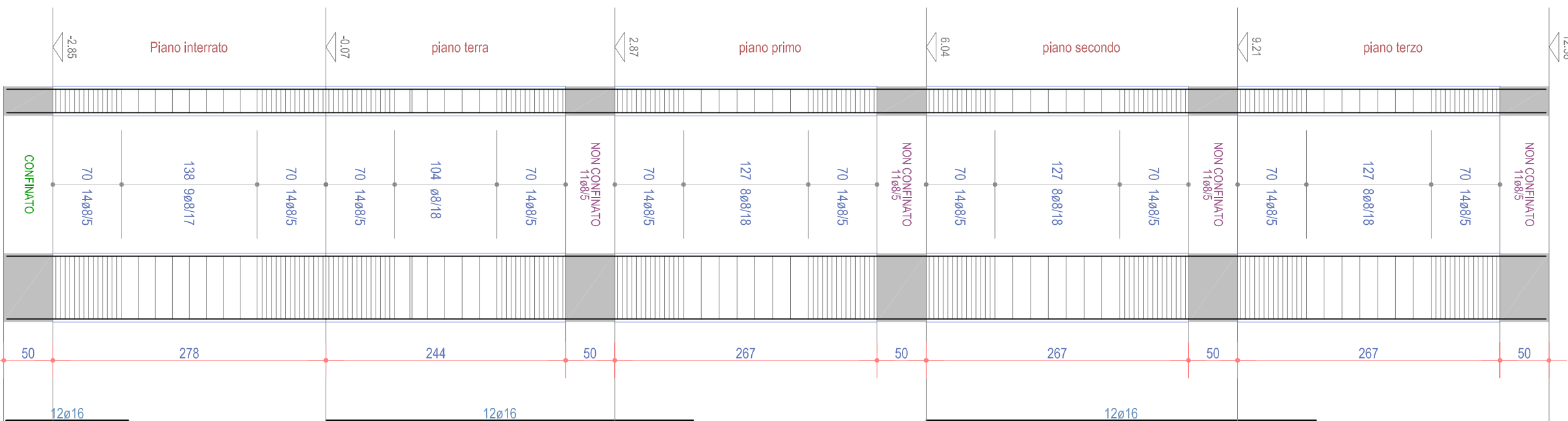
PILASTRATA 4



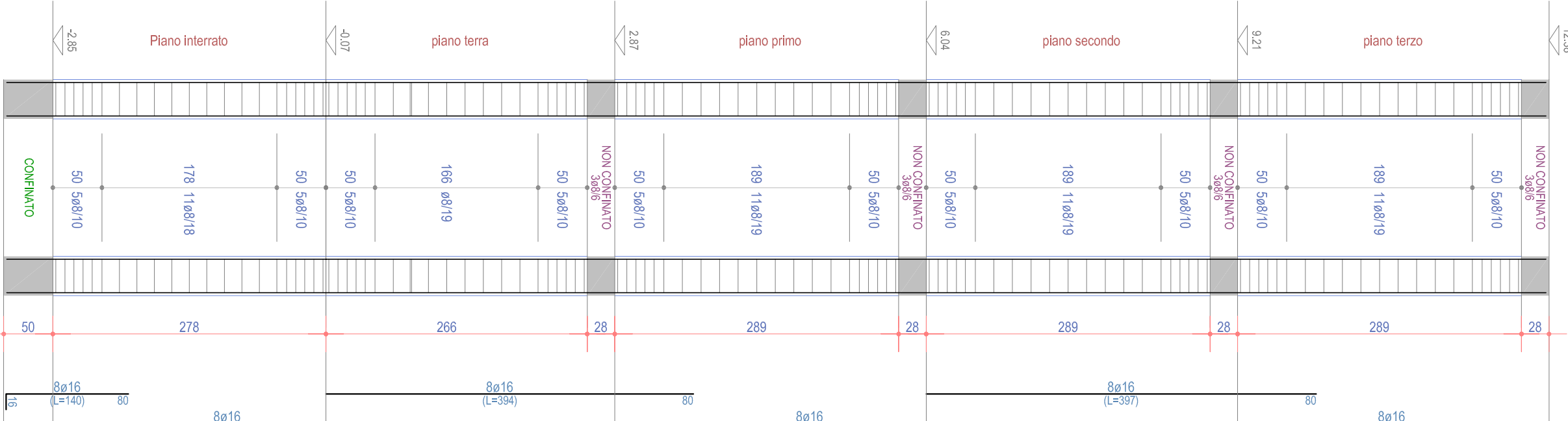
PILASTRATA 5



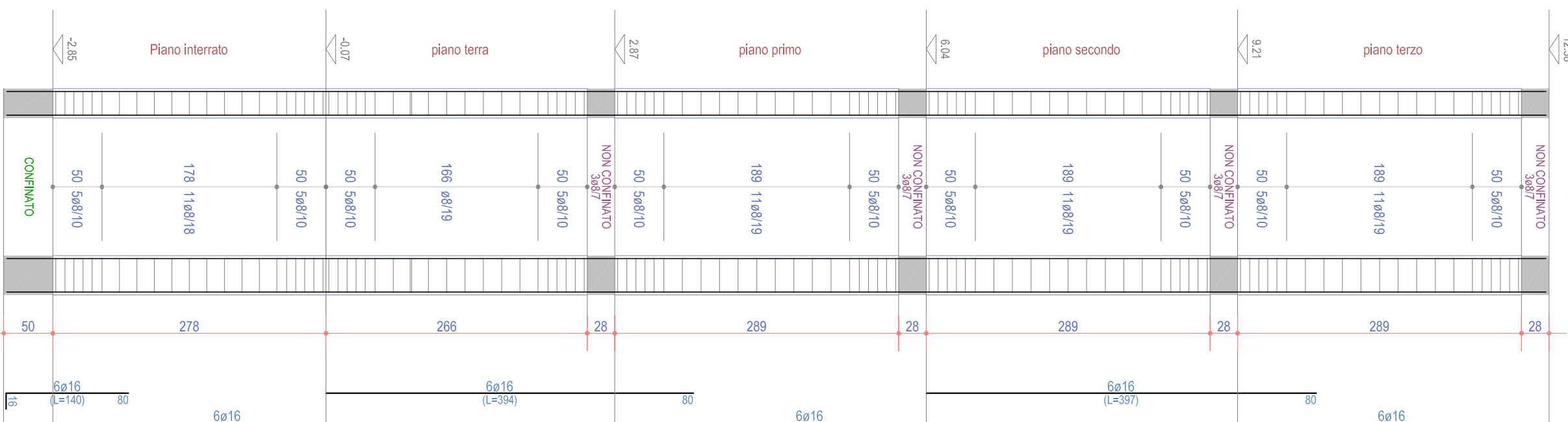
PILASTRATA 6



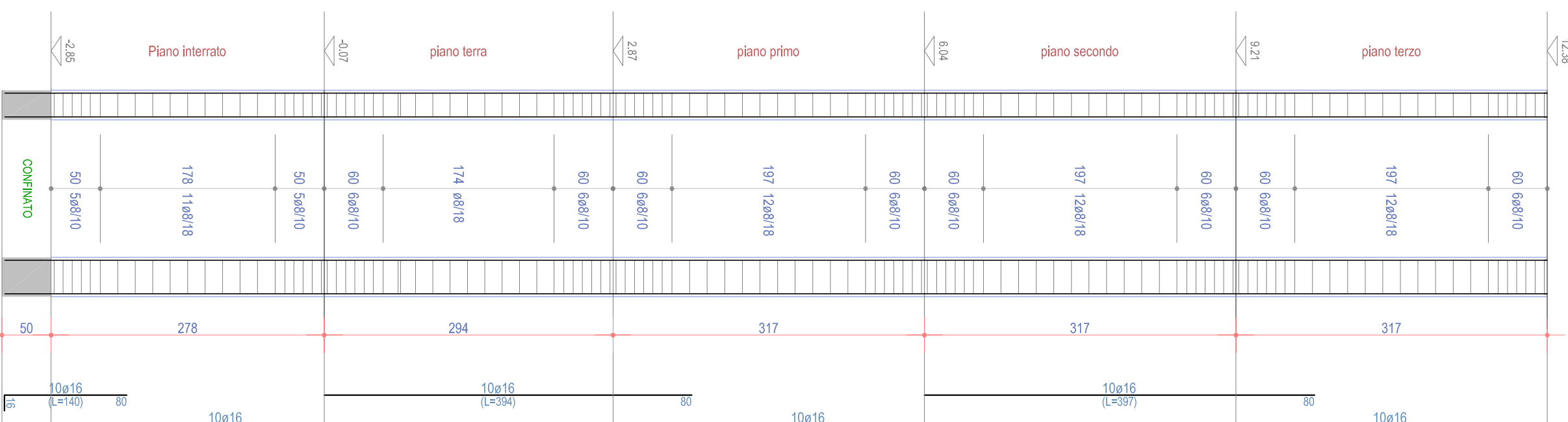
PILASTRATA 7



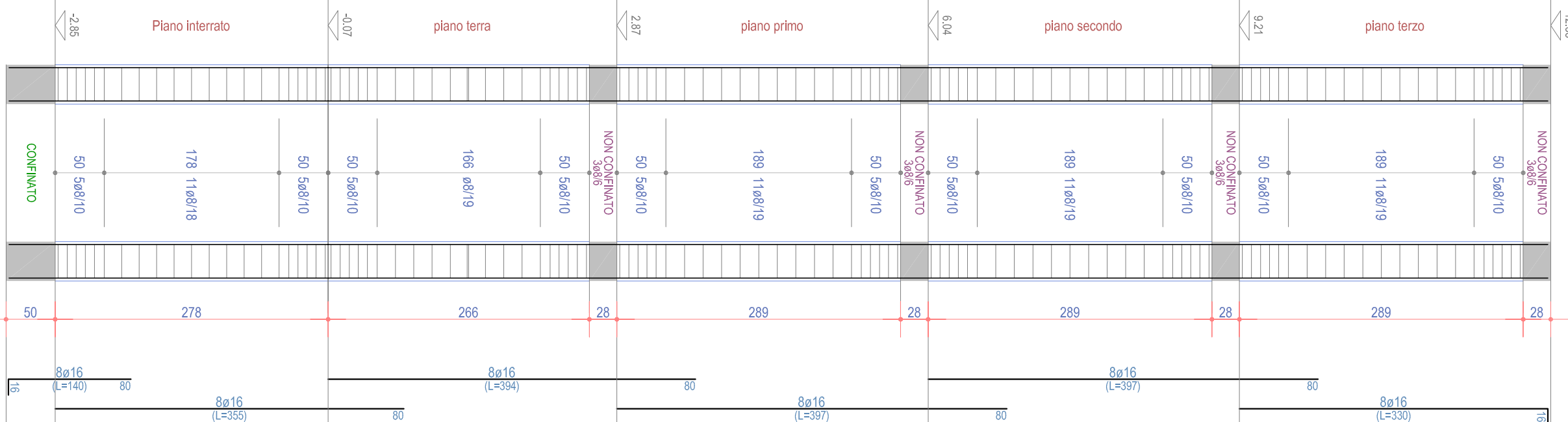
PILASTRATA 8



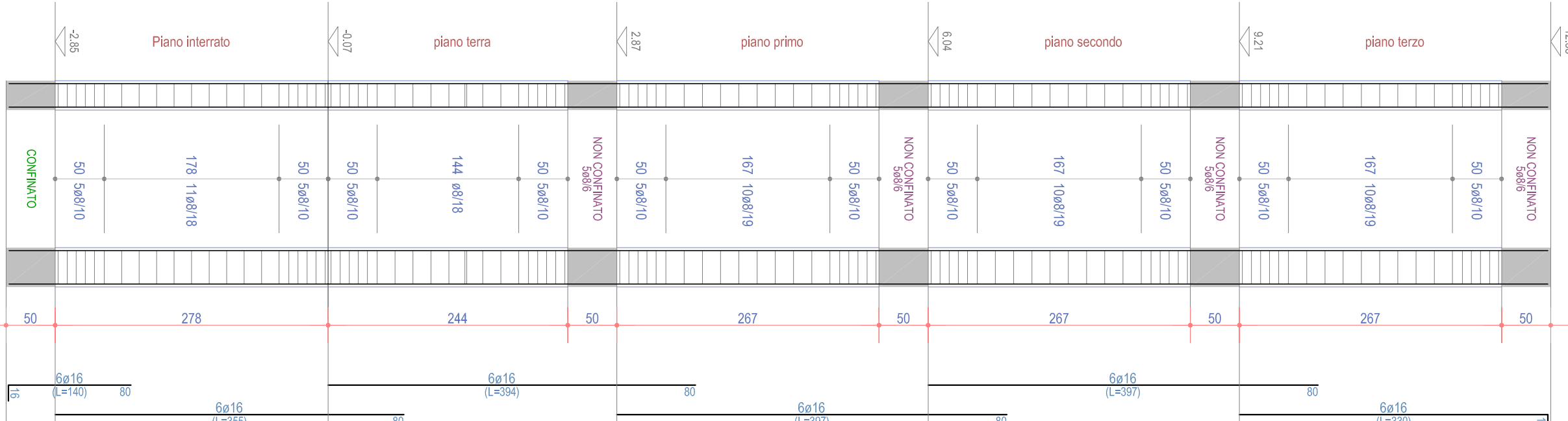
PILASTRATA 9



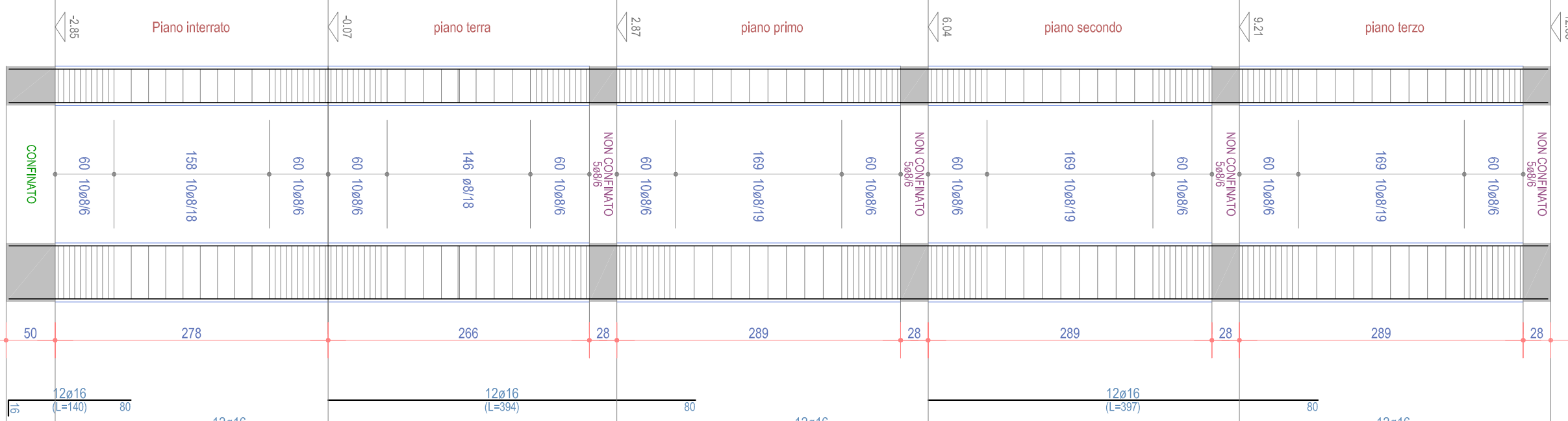
PILASTRATA 10



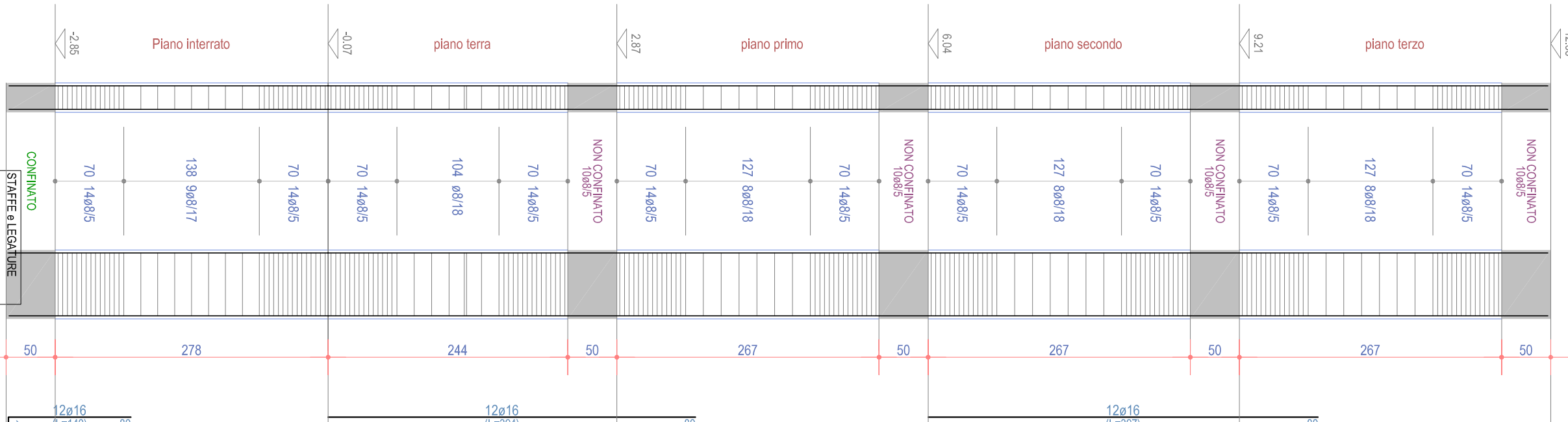
PILASTRATA 11



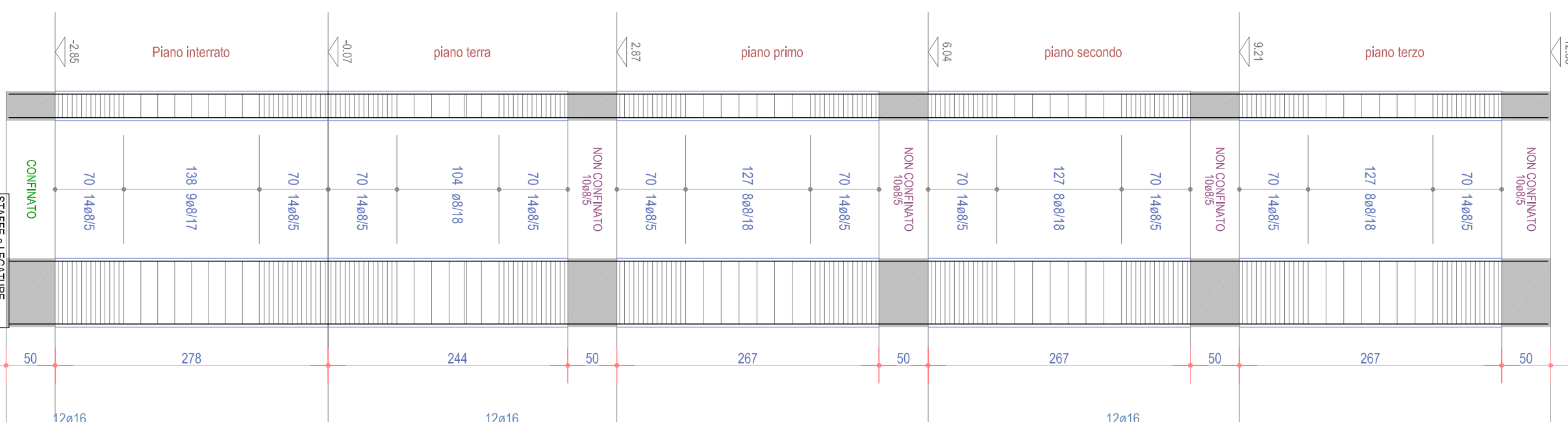
PILASTRATA 12



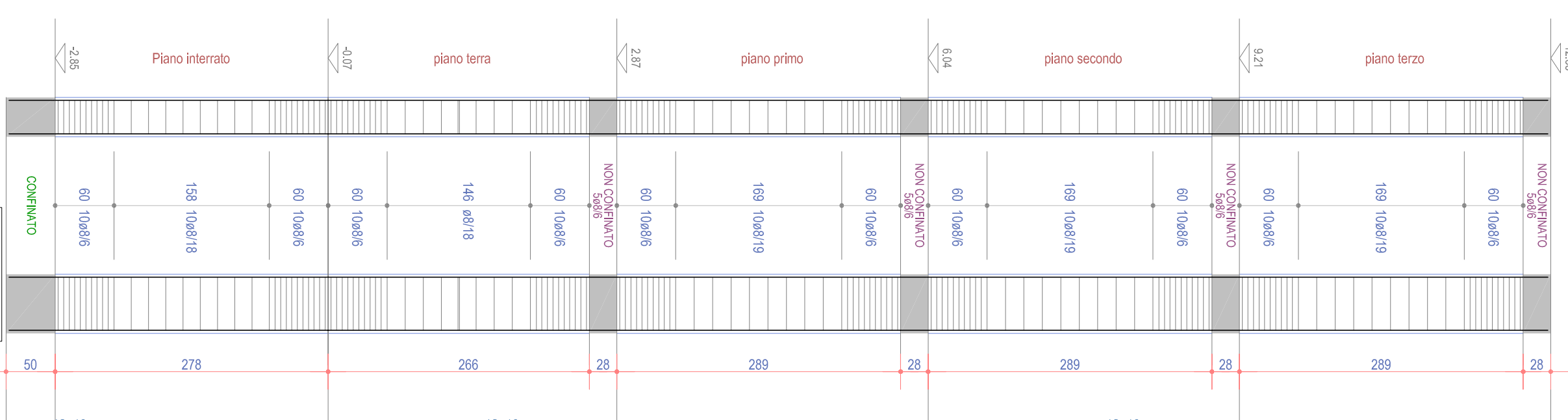
PILASTRATA 13



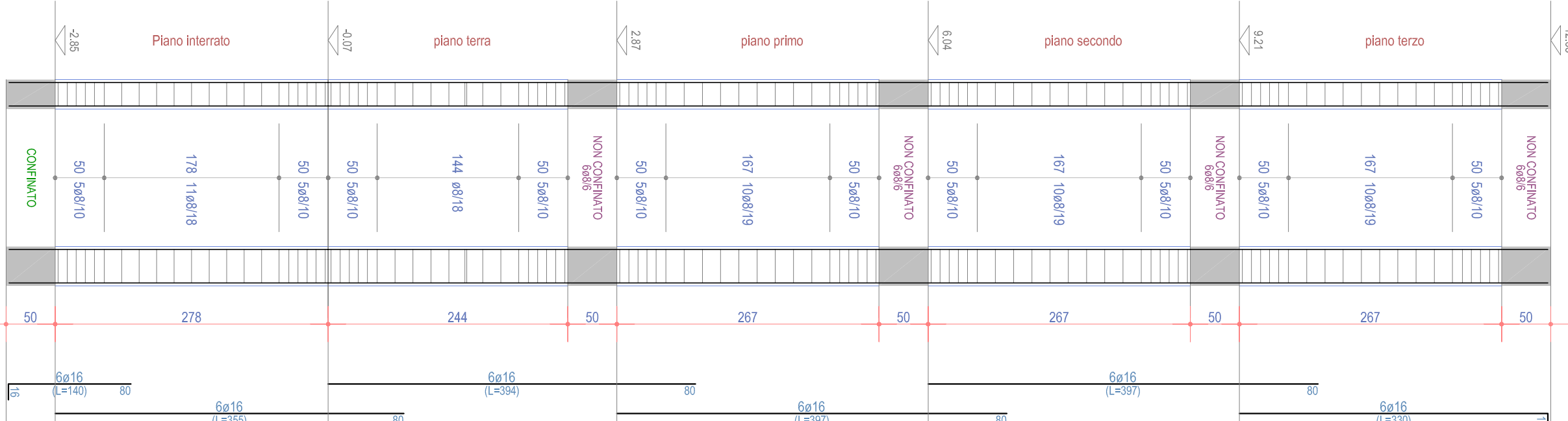
PILASTRATA 14



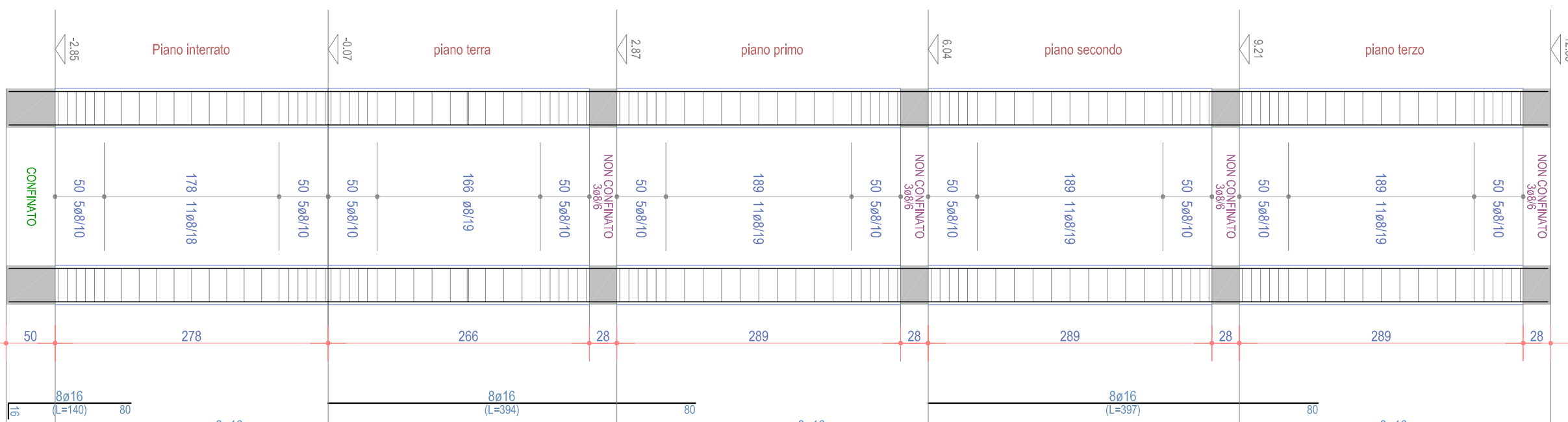
PILASTRATA 15



PILASTRATA 16



PILASTRATA 17



PILASTRATA 18

